



Social indicators in Iceland

Nordic Public Health Conference

Aalborg, August 2017

Jenný Ingudóttir





Where did they come from?

- The Icelandic welfare watch was established in 2009 following economic crisis in 2008
- A special emphasis on protecting vulnerable groups and families and children. Advisory role toward government and local authorities. „.. Nobody should be left behind as a consequence of the banking crisis“
- The Icelandic Welfare Watch took the decision to develop and implement social indicators, first presented in 2012.



How are they collected?

- The existence of the social indicators was secured in December 2012, when the Ministry of Welfare, the Ministry of Finance and Economics and Statistics Iceland signed an agreement to the effect that Statistics Iceland would be in charge of the data collection and processing of the data for social indicators and hired an expert for the implementation of the project.



What is the purpose?

- To provide a collection of statistical data in one place, enabling the public and the government to follow developments and changes in society and compare the situation of various groups to that in other countries.
- Statistics for specific groups when relevant
- Support for governmental policy making
- The bigger picture where welfare, health, wellbeing and the population's need are in the forefront.
- A tool to identify groups in need where societal actions have not been successful



What are the social indicators?

- First published in 2012
- Included:
 - 1) Demography
 - 2) Equity
 - 3) Sustainability
 - 4) Health
 - 5) Cohesion



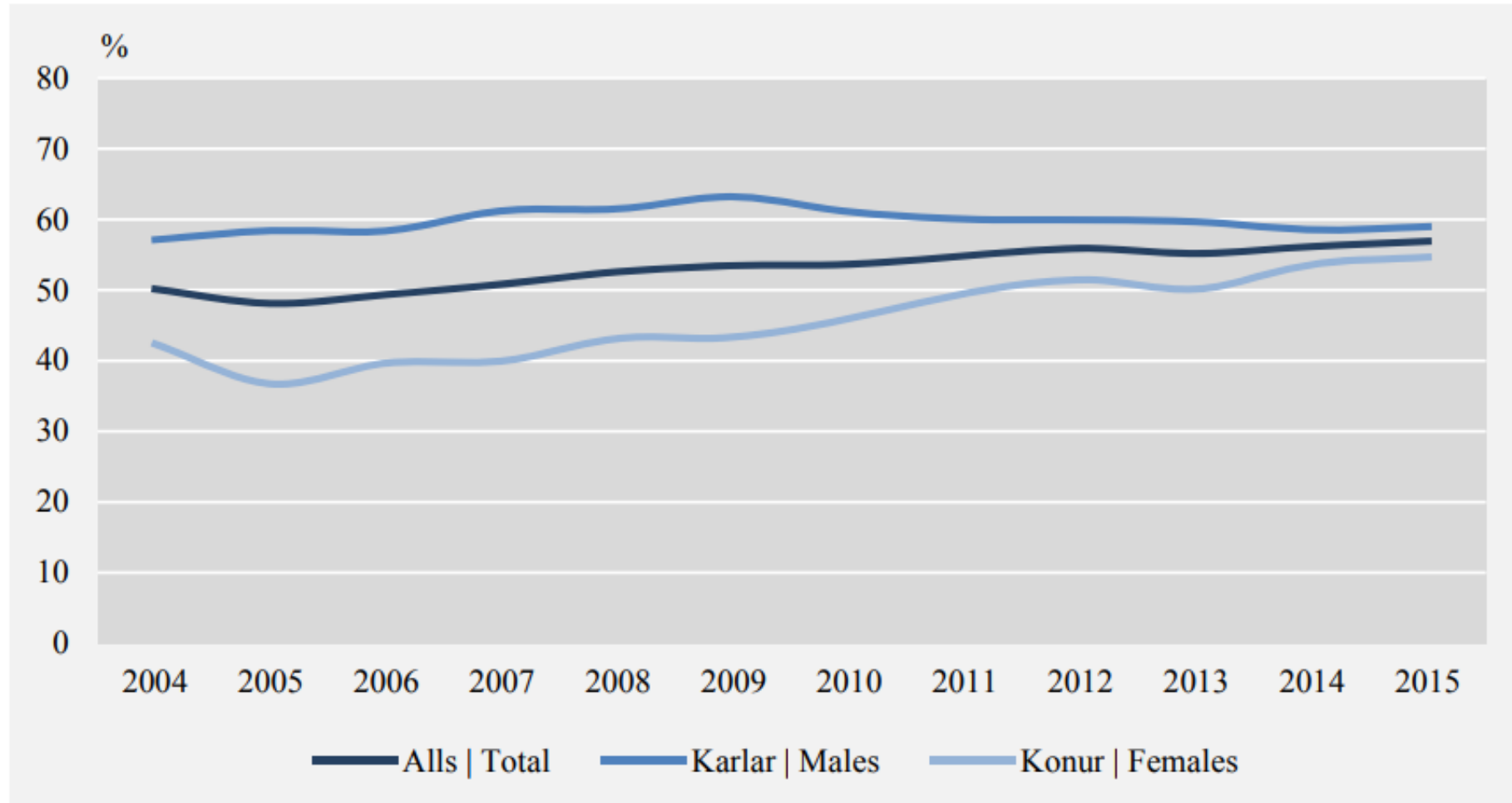
The social indicators for 2016

- **Demography and activity levels**
 - demographic features, education and labor participation
- **Quality of life, living conditions and welfare**
 - Income, assets, debts and housing situation according to family types, gender and age when applicable. Indicators regarding several welfare services
- **Health**
 - Children's health, primary health care, use of medication, risk factors and expenses. Health indicators show health in relation to social and economical situation and people's lifestyles.
- **Children**
 - aggregated measures of quality of life and lifestyle of children in Iceland.



Mynd 1. Fólk á aldrinum 20–24 ára í foreldrahúsum eftir kyni 2004–2015

Figure 1. Share of 20–24 year olds living with their parents by sex 2004–2015

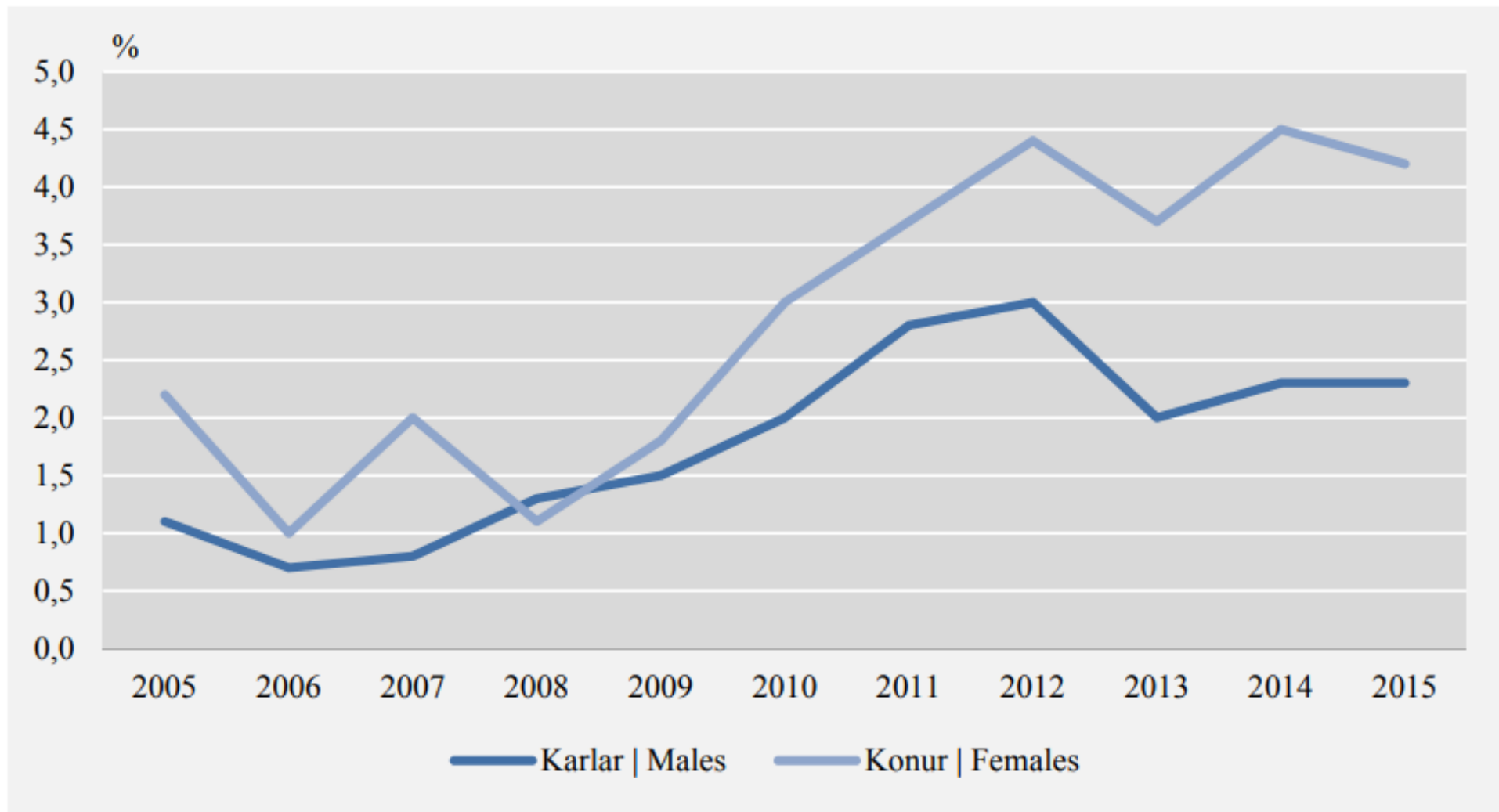


Skýringar Notes: Upplýsingar um 95% öryggisbil árið 2015 má finna í töflu aftast í heftinu. Information about 95% confidence intervals for 2015 can be found in table at the end of the report.



Mynd 4. Fólk sem fór ekki til læknis sökum kostnaðar eftir kyni 2005–2015

Figure 4. People who didn't see a doctor due to cost by sex 2005–2015

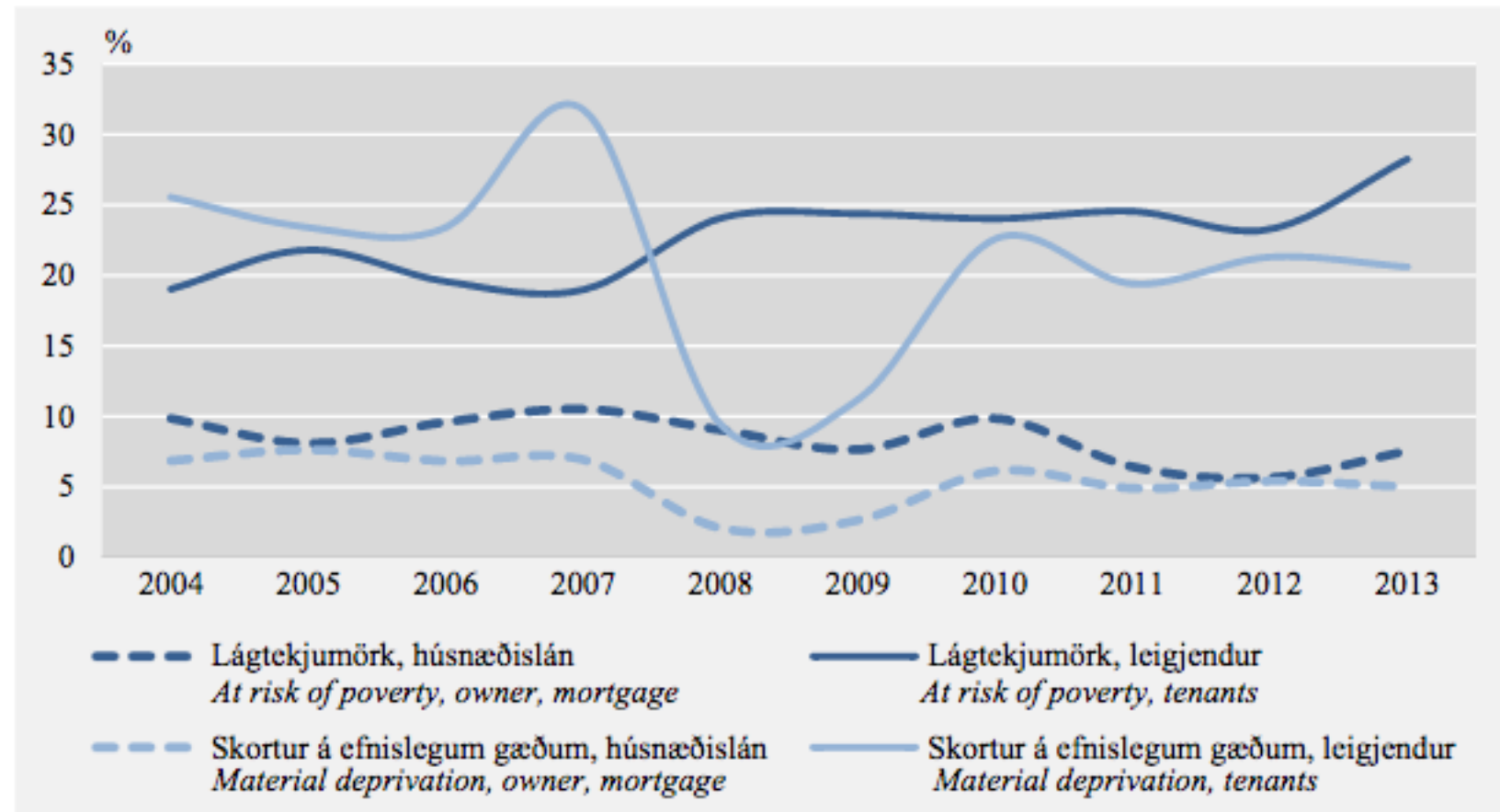


Skýringar Notes: Tölugildi eru í töflu 2 í viðauka. *Exact values are to be found in table 2 in the appendix.*



Mynd 9. Hlutfall barna sem búa á heimilum undir lágtekjumörkum eða sem skortir efnisleg gæði eftir stöðu á húsnæðismarkaði

Figure 9. Proportion of children at risk of poverty or materially deprived by tenure status



Skýringar Notes: Öryggisbil (95%) 2013: Skortur á efnislegum gæðum, leigjendur $\pm 6,4$; með húsnæðislán $\pm 1,6$. Undir lágtekjumörkum, leigjendur $\pm 6,9$; með húsnæðislán $\pm 2,1$. CI (95%) 2013: Material deprivation, tenants ± 6.4 ; paying mortgage ± 1.6 . At risk of poverty, tenants ± 6.9 ; paying mortgage ± 2.1 .



The road ahead

- Further collection and use of the social indicators
- The Nordic Wellbeing indicators



- The Social indicators (in Icelandic):
<https://www.stjornarradid.is/verkefni/felags-og-fjolskyldumal/felagsvisar/>
- Nordic Welfare indicators (in English):
<https://eng.velferdarraduneyti.is/nordicwelfarewatch/nordic-welfare-indicators/>



Thank you for your time

